



2024 Bucks County House Tour*

Sunday, June 23
10AM - 3PM

Three spectacular properties

TICKETS ON SALE NOW
\$75

(ages 12 and above)

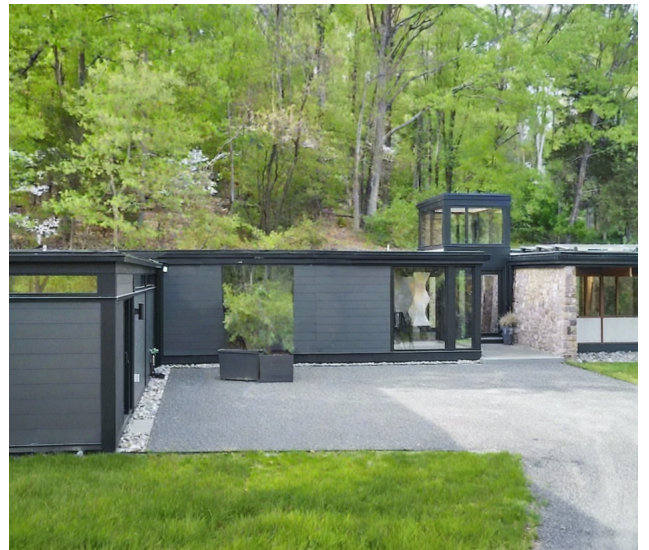
at

TBBBUCKSHOUSEDTOUR.COM

Interested in becoming a sponsor?
Email us: info@turnbucksblue.com



Drumbore Farm: A gathering place.

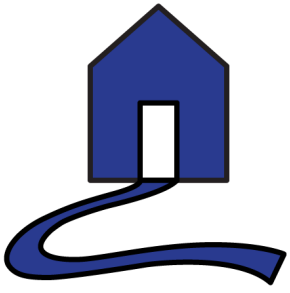


Coda by Jules Gregory



Black Horse Farm: Living deliberately

*Hosted by the independent political action committee Turn Bucks Blue. Paid for by TBB PAC. Not authorized by any candidate or candidate's committee.



2024 Bucks County House Tour*

Sunday, June 23
10AM – 3PM

TICKETS
ON SALE
NOW !



Black Horse Farm is a classic Pennsylvania working farm on 60 acres with streams, a pond with dock, lush pollinator meadows, hedgerows, and a French potager garden. The original house, built in 1854, has been left historically intact and enlarged by two additions. Tour a potting shed guest house, a Pennsylvania bank barn, with heritage animals, an apiary, and an art studio.



Coda by Jules Gregory (c. 1957) marries the simplicity of local barns and fieldstone houses to a mid-century vernacular of light and space. When the current owner purchased the house in 2019, he restored signature Gregory elements: open, multi-level spaces, natural wood, and walls of glass that let in sunlight and nature. Coda sits at the crest of a hill on one of Solebury's oldest and loveliest roads.



Drumbore Farm dates to Henry Drumbore who purchased it with 180 acres in 1798. The present stone house, barn, and summer kitchen were built in the 19th c. Your hosts acquired Drumbore with ten remaining acres in 2006. They preserved the original spaces as they expanded, using materials repurposed or sourced locally. A renovated bank barn provides a venue for joyous country parties.

TICKETS \$75 (ages 12 and above)

at TBBBUCKSHOUSEDTOUR.COM